

**SULO®**



**Prima Linea®**  
**50 Liters litter bin**



## **MATERIALS / TECHNICAL CHARACTERISTICS**

Body, cover and support in high-density injected polyethylene, colored and treated against ultraviolet radiation. The raised stripes on the body give it a strong anti-vandalism character.



Its design allows integration in any part of the city.

It allows its location to an existing pole or supporting element, such as lighting lamps, signals, traffic lights, etc. It can also be installed with its own post, a system that few use to avoid increasing the number of elements in transit places.

### **MANUFACTURING PROCESS**

The manufacturing process is injection. The main advantage of this system is the high quality of finish, added to high productivity and being able to make highly complex parts.

**The bin is made of 100% recycled CIRCULAR ECO material for standard gray colors (RAL 7021 and RAL 7043)**



Model 4 is composed of 3 main elements:

**BODY.** It presents a characteristic groove along its entire outer surface except for a small strip on its front.

**COVER.** With the shape of a hemispherical cap, it protects the interior of the tank from rainwater and the vision of waste.

**BRACKET,** It is made of plastic material reinforced with a metal core. The lock will be housed in the upper part, and is attached to the body from the rear. Lock type is standard.

## MECHANICAL CHARACTERISTICS

### EASY TO USE

#### FUNCTIONALITY

The rounded shape of the lid makes it difficult for rainwater to enter. It allows the deposit of waste from all sides. This model comes standard with a cigarette extinguisher on the front, just below the filler hole.

#### 100 % RECYCLABLE

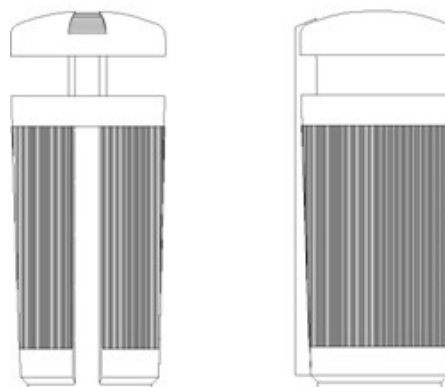
At the end of its useful cycle this model can be fully recycled.

#### MAINTENANCE AND EMPTYING

The attachment of the body to the support is carried out by fitting the lower part of the body to a projection in the lower part of the support, and subsequently fitting the lock (manual with triangular key). If these fittings are not made correctly, the bin will not remain standing, which means that there is no possibility of having bins misfitted.

The emptying is produced by releasing the lock and disengaging the body from the support at its bottom.

## DIMENSIONS



↻ Height	840 mm.
↻ Diameter	350 mm.
↻ Weight	6 kg.

## INSTALLATION

This model allows it to be fitted to an existing post or supporting element, such as streetlights, signals, traffic lights, etc. It is also possible to install it on its own pole and even the **installation of three units on the same pole.**

The installation either to its own post or supporting element is produced by means of straps and buckles that join the body of the bin with the corresponding pole.





## STANDARD BODY COLORS



GREY  
RAL 7021



GREY  
MADRID (GD)  
RAL 7043

\* Wide range of non-standard colors to choose from upon request of minimum quantities.

## CUSTOMIZATION



The lid, in the center, has a square of **70 x 70 mm.** to emboss the coat of arms of the city where it is to be installed. The engraving of the shield is made by means of a mold insert

## FUNCTIONAL ADVANTAGES

### ANTI-VANDALISM DESIGN

- ➔ Vertical scratching prevents stickers and graffiti
- ➔ Shock and deformation resistance
- ➔ Limited inlet hole to prevent entry of bulky waste
- ➔ Lock to avoid manipulation by non-service personnel

## FUNCTIONAL

- ➔ Litter bins with a lid to prevent the entry of rain water
- ➔ Optional stainless steel ashtray
- ➔ Possibility of installation on any type of staff, pole, sign, etc.
- ➔ Easy and simple handling / maintenance / washing
- ➔ Front handle to avoid coming into contact with waste during emptying and washing operations
- ➔ 100% RECYCLABLE.

## ACCESSIBILITY

- ➔ Thanks to the height of the waste inlet hole

## REGULATIONS / CERTIFICATIONS

This model of litter bin complies with the EN European Standard and is manufactured in ISO 9001, ISO 14001 and OHSAS 18001 certified Production Centers.



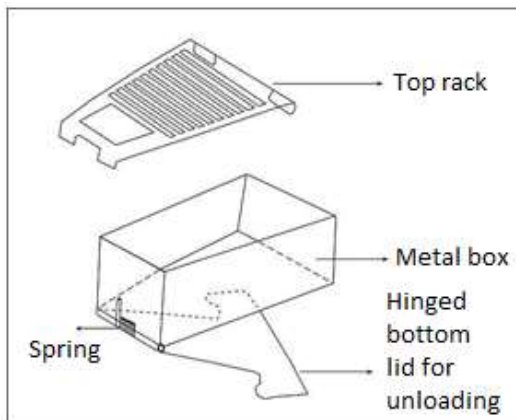
## OPTIONAL ELEMENTS

### Ashtray



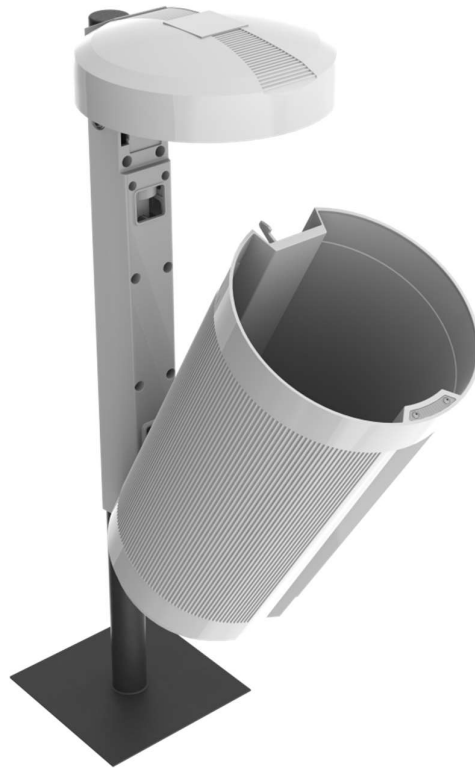
The ashtray consists of a metal box with the appropriate dimensions to fit between the internal nerves in the lower part of the lid.

For the arrangement of the butts, a cut is made in the lid, which allows the passage from the outside to the recessed box. This cut is protected and decorated with a die-cut sheet to facilitate the extinguishing of the butts.



To empty the ashtray, the lower lid of the metal box has been designed with a hinge, and it is kept closed thanks to the action of a spring on the hinge. It can be easily opened from the outside of the bin by garbage collection services.







## TRIPLE RECYCLING POINT

This model allows **up to three bins** on the same post, making it perfect for placing separate collection points in the city.



### COLORS OF THE COVERS

